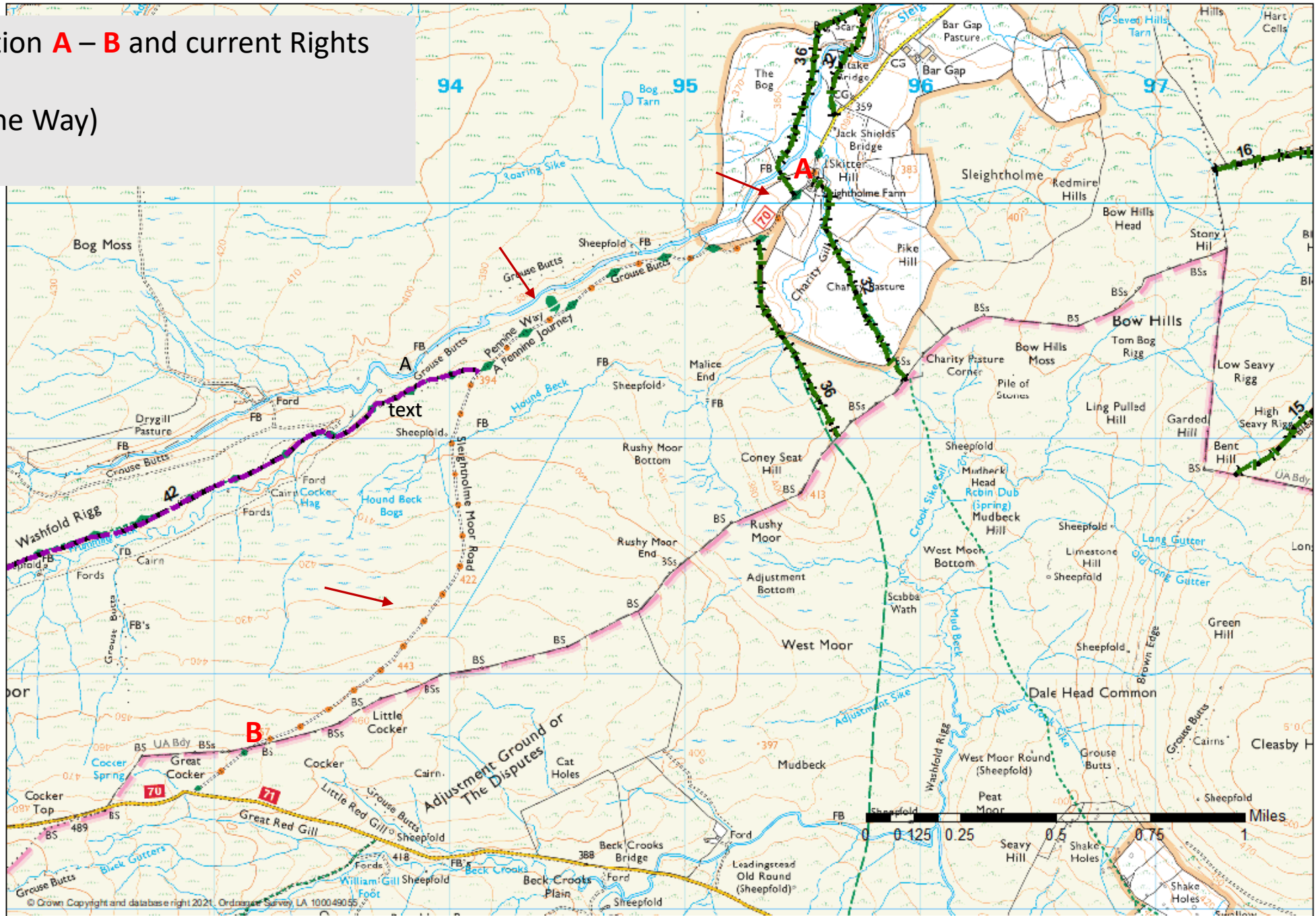


Definitive Map Modification Application Sleightholme Moor Road/ Track Document Evidence

Appendix 2

Document A: Route Location A – B and current Rights of Way
Footpath – Purple (Pennine Way)
Bridleways - Green



Document B: Fowlers 1834 Map of Yorkshire showing the Mail, Turnpikes and Cross Roads



Document C: Frank's 1840 Plan of the East and North Ridings of Yorkshire



Document D: Extract of Walkers Map of North Riding of Yorkshire 1840

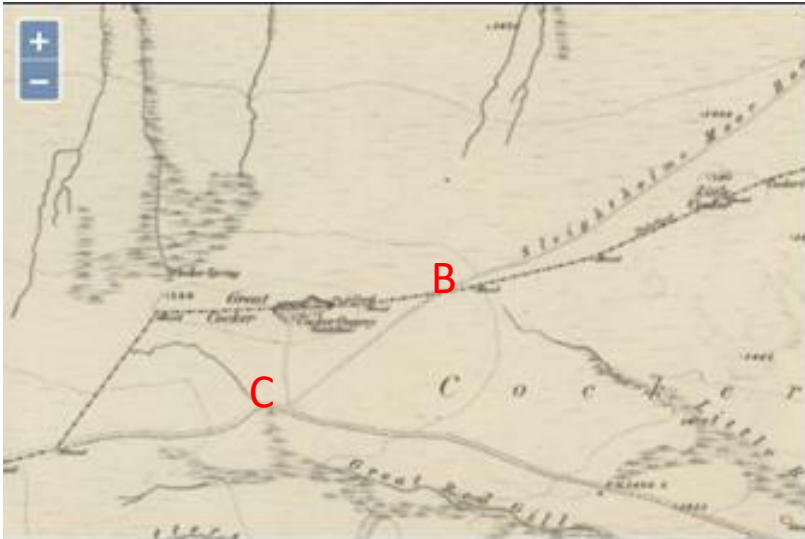


Document E: Extract of Bowes Tithe Map shows Road from Gilmonby to Tan Hill. Sleightholme Farm is circled, road continues Southwest – south and section to Tan Hill is annotated, route shaded in brown indicating it as public highway.

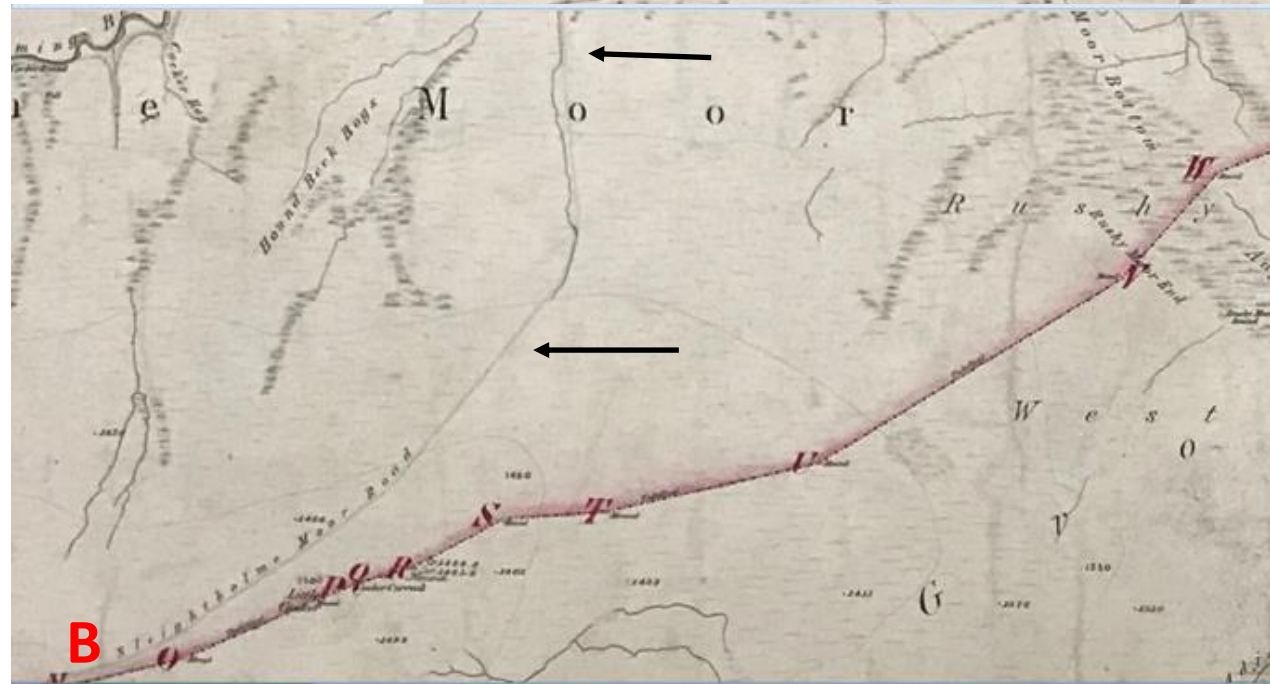
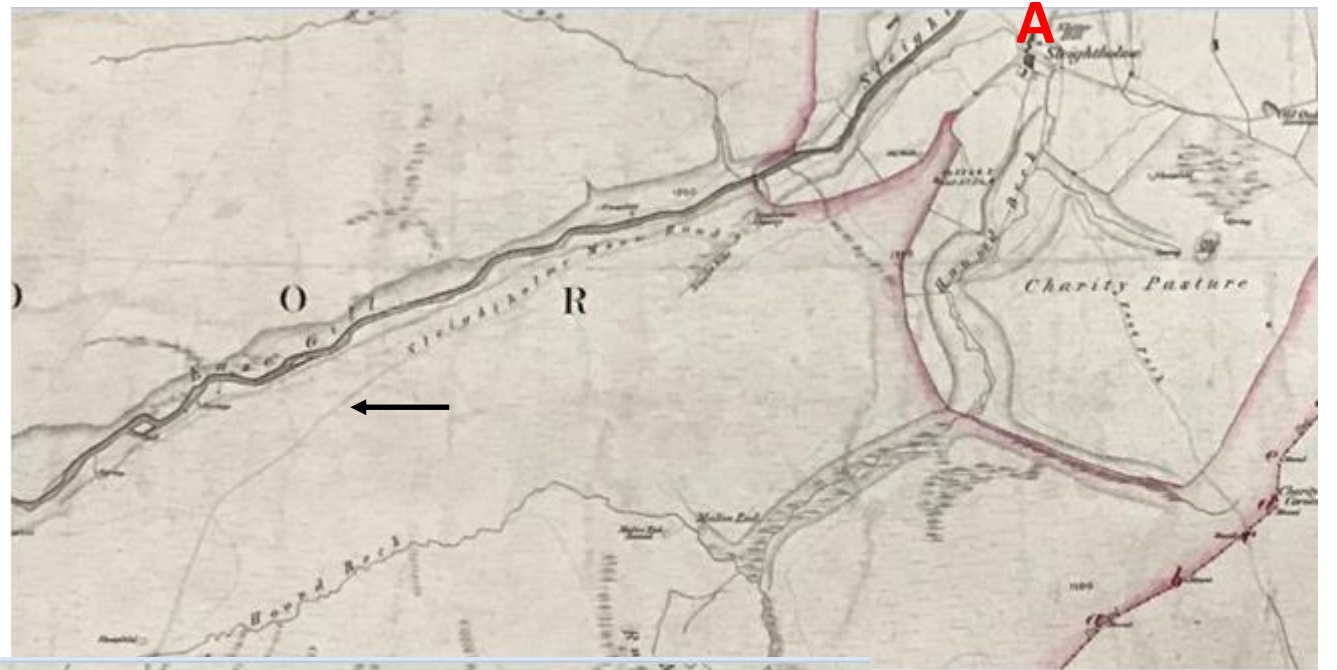


Document F : Extracts from 1856 First Edition Ordnance Survey 1:6 inch
A – B application route.
(OS Map extracts from National Libraries of Scotland online: <https://maps.nls.uk/>).

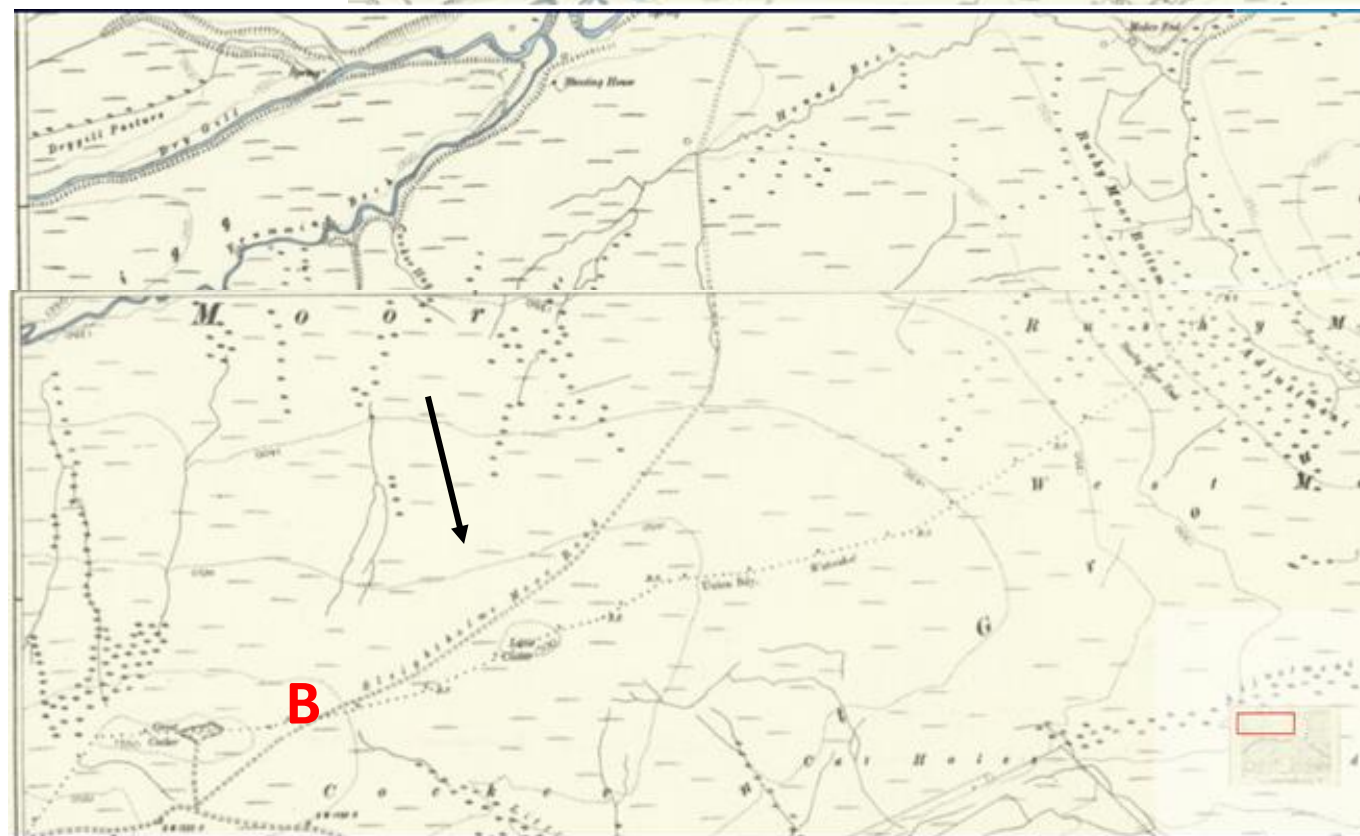
Section at South End ,B –C is within
North Yorkshire



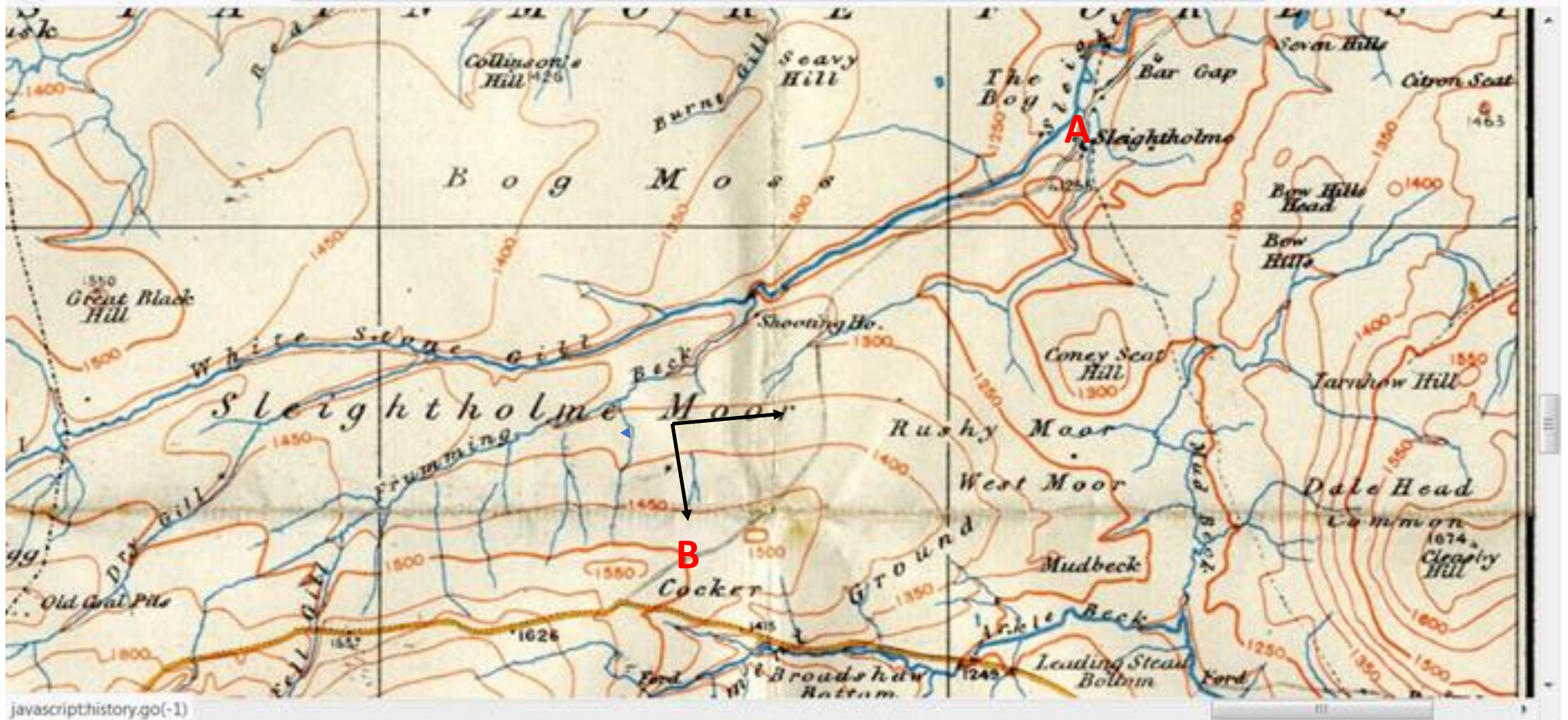
Document G: Extract from the Inclosure Plan 1859, 1856 OS First Edition Map was used as the base map. Application route shown A – B.
(Extract from the National Archives MAF 1/192).



Document H: Extract from the Second Edition 1895 1:6 inch Map.
(OS Map extracts Yorkshire XXII.NE, Yorkshire XXII.SE, from National Libraries of Scotland online: <https://maps.nls.uk/>).



Document I: Extract from 1918 OS One Inch to the Mile, application route shown as single grey line between A-B.



Document J: 1922-3 Ordnance Survey Ministry of Transport Map



Home - Forums - Photo Gallery - Wiki - Maps - Society - Websites - Links - Help Log in | Register

SABRE Maps 1922-23 MoT 4 (Middlesbrough Richmond and Ripon) 1922-23

Disable Markers Clear Markers Map Fader Create Map Link Trace Path Traffic Counts

Show / hide menu

Select a category:
OS Ministry of Transport

Select a layer:
1922-23 MoT

About SABRE Maps

Find:

Include pictures

W E S M O O R

Chillington's Hill 1426

Seavy Hill

Sleightholme

Citron Seat 1463

Seargill High M.

Bog Moss

Bow Hills

White Crag Mass 1623

Frunning

Arkle Beck

Raggergill Moor

1537

1415 Ground

1816

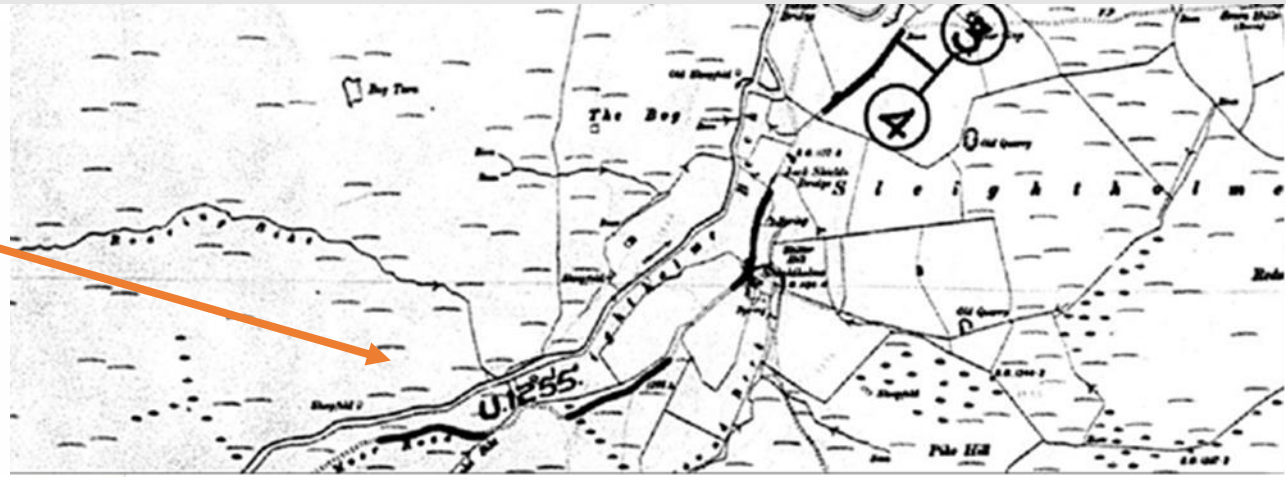
Historical maps from SABRE
[SABRE Maps sheet coverage information](#)

Some maps on this layer provided by [The National Library of Scotland](#)

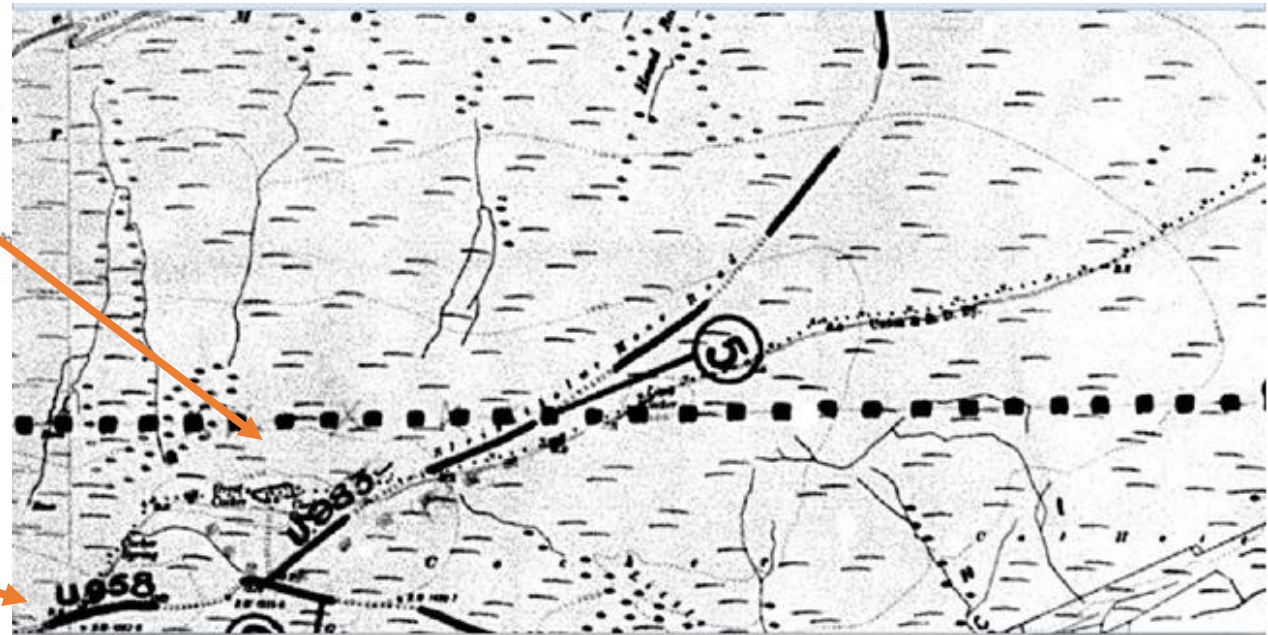
Home - Forums - Photo Gallery - Wiki - Maps - Society - Websites - Links - Help

Document K : Extracts from 1930 Highways Map and accompanying List, North Riding of Yorkshire

U.1249	U -	do. do.
U.1250	U -	A.66 - East Melwaters.
U.1251	U.808	Back Lane in Bowes.
U.1252		Hedgeholme-Ovington - Hutton Magna - A.66
U.1253	S.816	Baldron - A.67
U.1254	S.816	Back Lane in Startforth.
U.1255	S.818	Gilmonby - Cocker.
U.1256	S.819	Levy Pool $\frac{3}{4}$ Strand Foot (N.of Bowes).
U.1257	S.819	Back Lane of Bowes.
U.1258	S.822	Fiddler House - East Briscoe.
U.1259	U.	Streets in Romalldkirk.
U.1260	U.804	Low Swinstone - Scargill.
U.1261	U.804	The Rigg - Rutherford.
U.1262	U.809	Lartington - Osmonflat.
U.1263	U.810	Lartington -

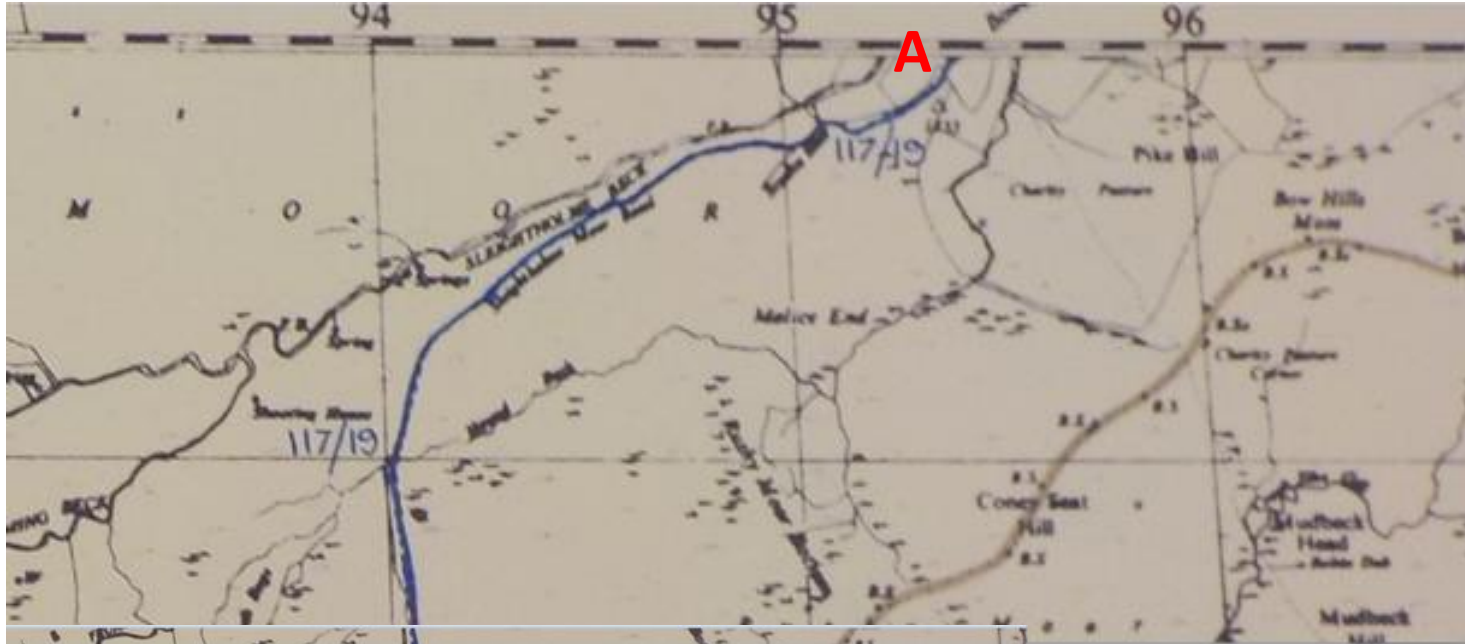


U.979	S.668	Marrick - Richmond -
U.980	" S.668	Back Street of Marrick.
U.981	" S.668	ditto. ditto.
U.982	" S.668	ditto. ditto.
U.983	Richmond S.710	Stainton Low Wood - Boundary.
U.984	" S.709 S.708 U.704	Side Bank Wood - Marske - Helw Long Green Gate - Carter House on boundary.



U.956	" S.651	Thirns - Healaugh.
U.957	" S.654	West Stonedale - Tan Hill Inn.
U.958	" S.655	Reeth - Langthwaite - Cocker. Startforth - Tan Hill - Boundary. S.818
U.959	Reeth S.653	Thwaite - Hood Rigg.
U.960	S.652	Angram.
U.961	S.659	Crow Trees - Oxnop Common.

Document L: Extract from 1974 Highways Handover Map



Extract from Highways Handover Map c.1974.
Route numbered 117/19 coloured blue denoting
an Unclassified Country Road , maintainable at
public expense.

Document M: Extract from Durham and North Yorkshire Current Highway Maps.

The image displays two screenshots of web-based highway maps. The top screenshot shows the Durham County Council 'Adopted Highways' interface. A popup window provides details for a specific road: Name: UNC 116.27, Type: UNCLASSIFIED NUMBERED ROAD, and Comments: UNC 116.27. The bottom screenshot shows the North Yorkshire County Council map interface. The legend on the right side of the map lists various road types, with 'Unclassified_Roads' highlighted by a red circle. The legend items are: Gritting routes, Road network, A_Roads, B_Roads, C_Roads, and Unclassified_Roads. The map also shows a search bar, a 'Search nearby' button, and a 'See on map' button. The map location is 396135, 510125, and the zoom level is 8.